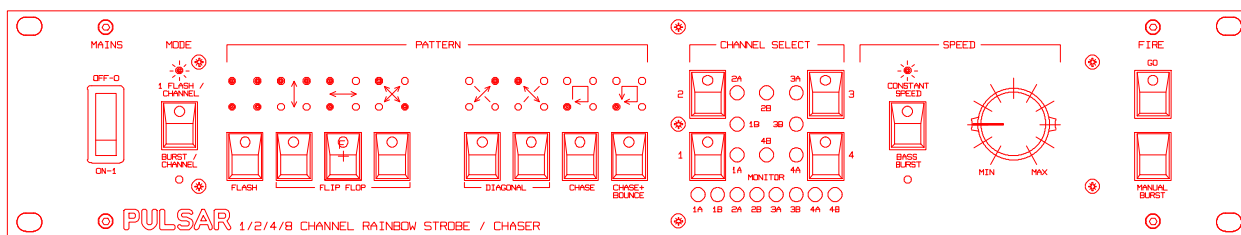


RAINBOW STROBE/CHASER



SPECIFICATION

20450 - 1/2/4/8 Channel Rainbow Strobe/Chaser 1U x 19" Rack Version

The **Pulsar Rainbow Strobe/Chaser** represents a major advance in Strobe Control Technology offering the most versatile choice of lighting effects at your fingertips.

The Rainbow has been carefully designed to be suitable for use as a Chaser or a Strobe Controller and to be suitable for driving 1, 2, 4 or 8 channels.

As a **Strobe Controller**, Jack to Jack leads would normally be connected from the sockets on its back panel to the remote control sockets on the Strobe back panels. It may be used with Pulsar Maxi, Jumbo and Monster Strobes. However it cannot be used to drive old MK I (RED) Jumbo strobes (Serial Nos. before 9623) as its top speed is too high for them.

As a **Chaser**, DIN-DIN leads would normally be connected from its back panel to Switching or Dimmer Packs which would control the mains power to the display.

FRONT PANEL CONTROLS

Electronics On/Off Switch With Built In Indicator Neon

This controls the power to the electronics.

Mode Switch - Selects between **1 Flash/Channel** (LED On) or a **Burst of Flashes/Channel** (LED Off)

Pattern Select - There are 8 switches to select your required pattern. These patterns have been designed to give good results regardless of the number of channels being run, although in general, the more channels used, the more effective the display. When used as a Chaser, the patterns will be seen to be quite elaborate with light chases, build-ups, build-downs and dark chases occurring automatically.

Channel Select Switches - These switches allow you to Enable (LED On) or Disable (LED Off) individual channels, although when driving 8 channels, each of the 4 switches controls a pair of channels.

Monitor LEDs - There are many different ways to arrange a display. Two monitor arrangements are provided to mimic the effect of 2 of the common arrangements - a linear display and a circular display.

For Strobes the 'circular display' may consist of a Strobe at each corner of the dance floor for 4 channel use, with an additional Strobe at the centre of each side for 8 channel use.

Constant Speed/Bass Burst Switch - With an Audio Input, **Bass Burst** (LED Off) gives a burst of flashes for the duration of the bass beat. The number of flashes per beat depends on the setting of the speed control.

Speed Control - A very slow tick over at **MIN**, through to 16 flashes per second per channel at **MAX**.

With Bass Burst selected, the number of flashes per bass beat is determined by the setting of the speed control - from 1 flash per beat at **MIN** to around 8 flashes per beat per channel at **MAX**.

Fire - Standby/Go Switches - **GO** with LED On.

The top switch is a latching switching, the bottom one is a momentary contact version for **MANUAL BURST**.

With the LED Off, remote enable from a touch panel for example, is possible. The monitor LEDs work all the time but the signal is only sent to the Output Sockets when the **GO** LED is on.

BACK PANEL CONNECTIONS

MAINS SUPPLY - 100 - 130V or 200 - 260V, 50-60Hz, 5 Watts

We recommend the use of a Residual Current Circuit Breaker. The mains cable should be fitted with a suitably approved and rated plug.

Note: in some countries it is a requirement that such a plug be fitted by a qualified electrician.

CABLE COLOURS

Green/Yellow = \perp Earth / Ground

Brown = Live / Phase / Hot

Blue = Neutral

WARNING - THIS APPLIANCE MUST BE EARTHED

Mains Voltage Selector - Check the setting.

Audio Input - An audio input is required to drive the unit in **Bass Burst** mode.

Two standard 1/4" stereo jack sockets are provided. Ensure that the polarity of the jack plug connections is correct.

Earth must go to the jack plug sleeve.

Do not feed the **Rainbow Strobe Chaser** with just one channel of a stereo system - the unit cannot be expected to follow the music accurately with only half the audio information.

I
N
S
T
R
U
C
T
I
O
N
S



PULSAR LIGHT OF CAMBRIDGE LIMITED

Henley Road - Cambridge - CB1 3EA - England

Tel: 44(0)1223 366798 - Fax: 44(0)1223 460708 - email sales@cpp.com

Directors: P F Mardon MA - K Sewell MA - A D Saunders - S Mardon - T M Sewell (Belgium)

REGISTERED IN ENGLAND 1300636

BACK PANEL CONNECTIONS (cont.)

Pre-Amp Level Input - Speaker Level. A stereo jack socket is provided. Mono systems should also use a stereo jack plug with the signal connected to both the tip and the ring of the plug.

	V_{RMS}	Z_{IN}
Pre-Amp	0.1 - 2.5	47K
Speaker	2.5 - 100	2M2

Remote Control Input - A mono jack socket is provided. If the **Rainbow** is switched to standby (**GO LED Off**) it can be switched on remotely by a Touch Panel, for example.

	Standby	Go	Z_{IN}
Input Level	0V	>3V	10K

Output Jack Sockets - 8 mono jack sockets - 1 per channel. Ideal for connecting to Strobes. Use 1/2/4/8 plugs depending on the number of channels in use in your system - see back panel printing.

	Off	Fire Strobe (Channel On)	Z_{OUT}
Output Voltages	0V	+14V	270R

The outputs come via isolating diodes so these outputs may feed the same Switching/Dimming Packs as other controllers - the highest taking priority.

Output DIN Sockets - Three DIN sockets are provided on the back panel. These are ideal for connecting to Switching or Dimming Packs.

When the **Rainbow** is used as a Chaser a single socket is provided for 1/2/4 channel use and a pair of sockets for 8 channel use. See following table and back panel for details.

	DIN SOCKET CONNECTIONS		
	4 Ch. OUTPUT DIN	8 Ch. OUTPUT DIN (1A-2B)	8 Ch. OUTPUT DIN (3A-4B)
Pin 2	0V	0V	0V
Pin 3	1A	1A	3A
Pin 4	2A	1B	3B
Pin 5	3A	2A	4A
Pin 6	4A	2B	4B

Notes:

Pin 1 linked on all DIN sockets to allow I_g to propagate.
Pins 7 and 8 not connected.

FUSES AND PRECAUTIONS

Failure of the **Electronics Fuse**, a **1 Amp, Glass L- Quick Blow, 5 x 20mm** mounted on the back panel for easy access when the unit is rack mounted, indicates an internal fault and servicing by a qualified engineer will be required.

We recommend that you check your lighting equipment regularly for damaged wiring, loose connections and potential short circuits.

OTHER INFORMATION

Battery Backup - A rechargeable battery maintains the **Rainbow's** memory of the Chase Pattern selected at switch off. The battery will remain charged for many months. At switch on, the pattern selected will be the same as at switch off and the battery will be automatically recharged.

Output Drive Capability - Each output channel can drive up to 5 Strobes and/or a virtually unlimited number of Switching/Dimmer Pack channels.

The **AUDIO INPUTS** are not earthed directly within the **Rainbow** but through a resistor. This eliminates earth loops and hence hum and interference on your sound equipment, however, your amplifier, Strobes, **Rainbow** and other equipment should all be properly earthed.

Automatic Volume Control Circuits - constantly adjust the audio sensitivity of the **Rainbow** to allow for changes in the volume and bass content of your music.

Spillage Of Drinks - If a drink is spilt on your **Rainbow**, immediately disconnect it, plunge the whole unit into clean water and rinse thoroughly. Shake and wipe dry, then leave in a warm place for 2 days or more to dry right out before use. Failure to do this will result in extensive damage - drinks are very corrosive.



MAINS CABLE REPLACEMENT - This modification should only be carried out by suitably skilled and competent persons.

Important - Ensure the brown 'live' wire does not protrude more than 10mm from the outer sheath. Replace the PVC sleeving (Pulsar Part No.8040) and the cable ties (Pulsar Part No.4267) which were removed to allow replacement.

PORTABLE APPLIANCE TESTING - The **Rainbow Strobe Chaser** may be safely Earth Bond and Insulation (500V) Tested.

STANDARDS - The **Rainbow Strobe Chaser** complies with the following International and National Standards:

Electrical Safety - IEC65, EN60065, BS415

EMC - EN50081-1, EN55014, EN50082-1

Rack Mounting - IEC297

Index of Protection - IP20

Marking Directive 93/68/EEC - The **Rainbow Strobe Chaser** meets both the EMC Directive 89/336/EEC and the Low Voltage Directive 73/23/EEC.



GUARANTEE - 12 months from the date of original purchase. The guarantee is limited to parts and labour. The guarantee is void if the unit is mis-used, repairs are performed by unauthorised persons, or the incorrect fuse has been used. In the unlikely event of a fault occurring, do not use without repair. Return the unit, with a description of the fault, to your supplier or direct to Pulsar for immediate attention.

ACCESSORIES

The following products have been designed to work with and compliment the **Pulsar Rainbow Strobe/Chaser Range**. Please contact us to receive further details of these superb products.

Strobes

Product No. Strobe

21300.1	Super Strobe	200-260 Volts.
21400.1	Maxi Strobe	200-260 Volts.
21400.2	Maxi Strobe	100-130 Volts.
20700.1	Jumbo Strobe	200-260 Volts.
20700.2	Jumbo Strobe	100-130 Volts.
28600	Monster Strobe	200-260 Volts.

PULSAR also manufactures a comprehensive range of Cables, Splitter Blocks, Strobes, Dimming and Switching Packs, Control Desks, Pinspots, and Stage and Rock and Effects Lanterns. Please contact us to receive further details of these superb products!

DIMENSIONS AND WEIGHTS

Code	Unit	Width	Height	Depth	Weight
		mm.	mm.	mm.	kgs.
20450	Rainbow Strobe/Chaser	482.6	88.1	75.0	2.1
20450	Rainbow Strobe/Chaser inc. skts	482.6	88.1	125.0	2.5
	Console Cut Out	450.0	86.5	130.0	-
	Fixing Holes	465.6	76.3	-	-